

AMD

PE FITTING

Total Solution For Pipe Joint



- PE Butt Fusion Fittings
- PE Electro Fusion Fittings
- PE Segmented Fittings

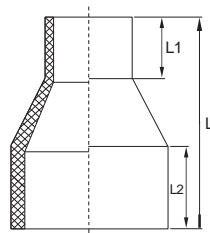
Feature :

- **Material** : PE 100
- **Size** : full 75mm through 800mm availability
- **Pressure Rating** : 1.0MPa, 1.25MPa, 1.6MPa or other nominal pressure available upon request
- **Standard** : ISO 4427-3, EN 12201-3, BS EN 12001-3 AS/NZS 4129 BS 6920
- **Color** : Black, Blue, Other colors are also available upon request
- **Joint** : joining pipe and butt joint fittings by butt fusion joint

Advantages :

- **Non-toxic** : no heavy metal additives, would no be covered with dirt or contaminated by bacteriumt
- **Corrosion Resistance** : resist chemical matters and electron chemical corrosion
- **Low Installation Costs** : light weight and ease of installation can reduce installation costs
- **High Flow Capacity** : smooth interior walls result in low pressure loss and high volume
- **Longevity** : more than 50 year under proper use

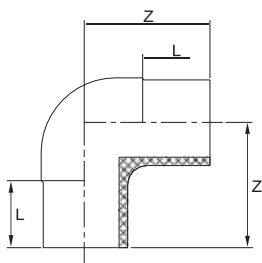
Reducer



Part Number	SDR	Size (mm)	L1	L2	L	Qty/Ctn
1236255	11	75x63	70	75	156	60
1236286	11	90x63	65	79	172	40
1236287	11	90x75	70	80	164	40
1236316	11	110x50	70	83	196	36
1236317	11	110x63	70	80	196	36
1236318	11	110x75	70	80	184	32
1236319	11	110x90	70	80	169	30
1236348	11	125x63	70	80	200	24
1236350	11	125x90	84	98	242	24
1236351	11	125x110	80	80	178	20
1236412	11	160x90	80	90	242	12
1236413	11	160x110	80	100	228	12
1236414	11	160x125	80	80	195	12
1236441	11	180x63	78	100	266	14
1236444	11	180x110	100	100	239	12
1236447	11	180x160	90	90	230	10
1236475	11	200x110	80	100	226	6
1236478	11	200x160	100	100	239	6
1236479	11	200x180				6
1236509	11	225x160	90	90	230	6
1236511	11	225x200	90	90	206	4

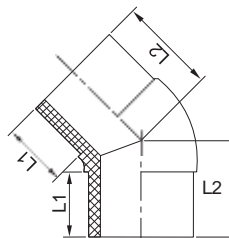
Part Number	SDR	Size (mm)	L1	L2	L	Qty/Ctn
1236537	11	250x110	80	90	210	5
1236540	11	250x160	80	90	283	3
1236542	11	250x200	90	90	246	4
1236543	11	250x225	90	90	206	3
1235568	13.6	280x110				3
1235571	13.6	280x160				4
1235573	13.6	280x200	85	85	250	4
1235599	13.6	315x110	90	85	225	2
1235602	13.6	315x160	90	90	225	2
1235604	13.6	315x200	100	100	286	2
1235605	13.6	315x225	90	90	222	2
1235606	13.6	315x250	90	90	240	
1235607	13.6	315x280	85	85	201	
1234635	17	355x200	80	80	287	
1234637	17	355x250	77	77	242	
1234639	17	355x315	90	90	220	
1234666	17	400x200	70	70	260	
1234668	17	400x250	80	80	248	
1234670	17	400x315	80	85	215	
1234697	17	450x200	70	70	254	
1234699	17	450x250	85	85	248	
1234701	17	450x315	90	100	270	
1237732	26	500x315	85	100	250	
1234732	17	500x315	85	100	250	
1237733	26	500x355	85	100	250	
1234733	17	500x355	85	100	250	
1237734	26	500x400	85	100	250	
1234734	17	500x400	85	100	250	
1234735	17	500x450	85	100	250	
1234765	17	560x400	90	95	250	
1234767	17	560x500	100	95	250	
1234794	17	630x315	100	100	290	
1234796	17	630x400	100	100	290	
1234798	17	630x500	100	100	290	

90° Elbow



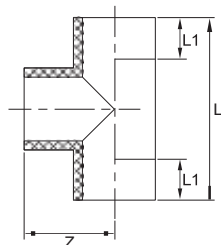
Part Number	SDR	Size (mm)	Z	L	Qty/Ctn
1246008	11	75	132	75	30
1246009	11	90	150	85	20
1246010	11	110	163	87	12
1246011	11	125	170.5	87	8
1246013	11	160	200	100	5
1246014	11	180	210	95	4
1246015	11	200	225	100	3
1244016	11	225	265	120	
1246016	11	225	265	120	
1244017	11	250	292	130	
1246017	11	250	292	130	
1244018	11	280	316	138	
1246018	11	280	316	138	

45° Elbow



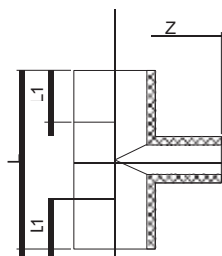
Part Number	SDR	Size (mm)	L1	L2	Qty/Ctn
1256008	11	75	80	124	30
1256009	11	90	85	136	18
1256010	11	110	87	145	12
1256011	11	125	87	150	10
1254013	17	160	100	175	
1256013	11	160	100	175	
1254014	17	180	105	183	
1256014	11	180	105	183	
1254015	17	200	110	193	
1256015	11	200	110	193	
1254016	17	225	122	215	
1256016	11	225	122	215	
1254017	17	250	130	232	
1256017	11	250	130	232	
1254018	17	280	140	250	
1256018	11	280	140	250	

Tee



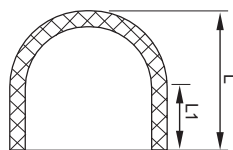
Part Number	SDR	Size (mm)	L1	L	Z	Qty/Ctn
1266008	11	75	75	264	132	18
1266009	11	90	85	300	150	14
1266010	11	110	87	326	163	8
1266011	11	125	87	341	170.5	6
1266013	11	160	100	400	210	3
1266014	11	180	95	420	420	3
1266015	11	200	100	450	225	2
1264016	17	225	120	530	265	
1266016	11	225	120	530	265	
1266017	11	250	130	600	300	
1264017	17	250	130	600	300	
1266018	11	280	138	632	316	
1264018	17	280	138	632	316	
1264019	17	315	150	710	355	
1266019	11	315				
1264020	17	355	110	660	330	

Reducing Tee



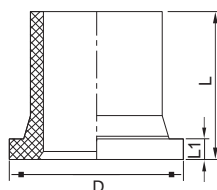
Part Number	SDR	Size (mm)	L1	L2	L	Z	Qty/Ctn
1266317	11	110x63	85	85	300	160	10
1266318	11	110x75	85	85	300	160	10
1266319	11	110x90	85	85	300	160	9
1266410	11	160x63	90	90	330	188	6
1266411	11	160x75	90	90	330	188	5
1266412	11	160x90	90	90	330	188	5
1266413	11	160x110	90	90	330	188	5
1264475	17	200x110	100	100	410	226	
1266475	11	200x110	100	100	410	226	
1264478	17	200x160	100	100	410	226	
1266478	11	200x160	100	100	410	226	
1264537	17	250x110	130	130	510	270	
1266537	11	250x110	130	130	510	270	
1264540	17	250x160	130	130	510	270	
1266540	11	250x160	130	130	510	270	

Cap



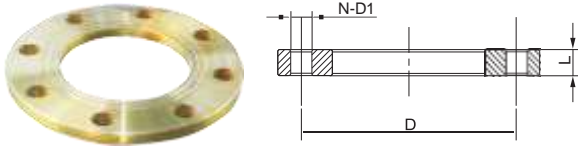
Part Number	SDR	Size (mm)	L1	L	Qty/Ctn
1276007	11	63	50.5	82	
1276008	11	75	75	113	100
1276009	11	90	75	120	60
1276010	11	110	74	130	40
1276011	11	125	80	143.5	24
1276013	11	160	98	179	15
1276014	11	180	88	180	12
1276015	11	200	98	199	8
1276016	11	225	90	204	5
1276017	11	250	97	224	4
1276018	13.6	280	78	220	4
1276019	11	315	74	140	
1276020	17	355	74	120	
1276021	11	400	74	160	

Stub Flange



Part Number	SDR	Size (mm)	L1	L	D	Qty/Ctn
1286007	11	63	14	100	97	
1286008	11	75	16	125	122	48
1286009	11	90	17	140	138	24
1286010	11	110	18	160	158	18
1286011	11	125	18	160	163	16
1286013	11	160	28	180	212	6
1286014	11	180	30	184	212	6
1286015	11	200	32	200	268	4
1286017	11	250	35	150	320	4
1286018	11	280	38	152	324	3
1286019	11	315	35	150	370	
1285020	13.6	355	35	120	444	
1284021	17	400	33	140	482	
1283023	26	500	46	130	600	
1284023	17	500	46	130	600	
1283024	26	560	50	130	657	
1284024	17	560	50	130	657	
1283025	26	630	50	150	704	
1284025	17	630	50	150	704	

Backing Ring (Steel Tray)

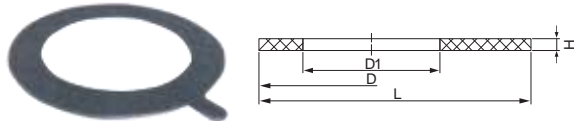


Part Number	Size (mm)	D	D1	N	L	Qty/Ctn
1.6Mpa						
1296008	75	145	18	4	18	48
1296009	90	160	18	8	20	36
1296010	110	180	18	8	22	32
1296011	125	180	18	8	22	32
1296013	160	240	22	8	24	15
1296014	180	240	22	8	24	15
1296015	200	295	22	12	26	8
1296017	250	355	26	12	29	4
1296019	315	410	26	12	32	3

Note : Sizes of 400, 450, 500, 630 and 800 are available upon request.

Part Number	Size (mm)	D	D1	N	L	Qty/Ctn
1.6Mpa						
1294015	200	295	22	8	24	
1294016	225	295	22	8	24	
1294017	250	350	22	12	26	
1294018	280	350	22	12	26	
1294019	315	400	22	12	28	
1294020	355	460	22	16	30	
1294021	400	515	26	16	32	
1294022	450	565	26	20	32	
1294023	500	620	26	20	32	
1294024	560	725	30	20	36	
1294025	630	725	30	20	36	
1294026	710	840	30	24	36	
1294027	800	950	33	24	36	

Rubber Gasket



Part Number	Size (mm)	D1	D	L	H	Qty/Ctn
1300008	75					
1300009	90					
1300010	110					
1300011	125	102	162	188	3.5	
1300013	160					
1300014	180	148	212	238.5	3.5	
1300015	200					
1300016	225	184	273	299.5	3.5	
1300017	250					
1300018	280	229	320	348.5	3.5	
1300019	315					
1300020	355					
1300021	400					
1300022	450					
1300023	500					
1300024	560	516	690	716	5	
1300025	630					
1300026	710	630	810	837	5	
1300027	800	738	915	942.5	5	

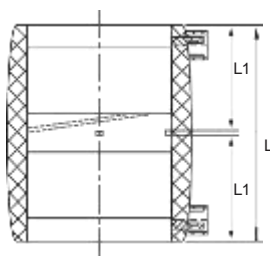
Feature :

- **Material :** PE 100
- **Size :** full 20mm through 400mm availability
- **Pressure Rating :** 1.6MPa, or other nominal pressure available upon request
- **Standard :** ISO 4427-3, EN 12201-3, BS EN 12001-3 AS/NZS 4129 BS 6920
- **Color :** Black, Blue, Other colors are also available upon request
- **Joint :** joining pipe and electro fusion joint fittings by electro fusion joint

Advantages :

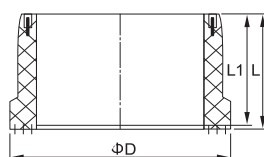
- **Non-toxic :** no heavy metal additives, would not be covered with dirt or contaminated by bacterium
- **Corrosion Resistance :** resist chemical matters and electron chemical corrosion
- **Low Installation Costs :** light weight and ease of installation can reduce installation costs
- **High Flow Capacity :** smooth interior walls result in low pressure loss and high volume
- **Longevity :** more than 50 year under proper use

E/F Coupling



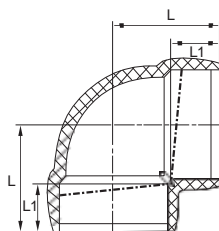
Part Number	Size(mm)	L	L1	Qty/Ctn
1310002	20			350
1310003	25			320
1310004	32	90	44	240
1310005	40	100	49	180
1310006	50	113	55	120
1310007	63	129	63	80
1310008	75	143	70	48
1310009	90	161	79	32
1310010	110	167	82	18
1310011	125	177	87	12
1310013	160	199	98	6
1310014	180	213	105	4
1310015	200	227	112	4
1310016	225	234	120	2
1310017	250	261	129	2
1310018	280	273	135	2
1310019	315	304	150	1
1310020	355	332	164	1
1310021	400	362	179	1
1310022	450	394	194.5	
1310023	500	425	210	

E/F Stub Flange



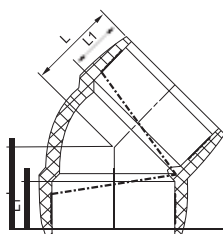
Part Number	Size(mm)	L	L1	Qty/Ctn
1350010	110	175	133	20
1350013	160	246	132	7
1350015	200	278	139	6
1350017	250	361	143	3
1350019	315	398	159	1
1350021	400	505	185	

E/F 90° Elbow



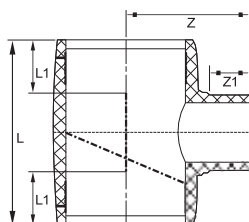
Part Number	Size(mm)	L	L1	Qty/Ctn
1320002	20			
1320003	25	65	44	240
1320004	32	74	49	160
1320005	40	86	55	100
1320006	50	100	63	60
1320007	63	114	70	40
1320008	75	131	79	24
1320009	90	145	82	16
1320010	110	159	87	9
1320011	125	190	96	6
1320013	160	206	105	4
1320014	180	225	112	2
1320015	200	265	129	2
1320017	250	320	150	1
1320019	315	395	179	
1320021	400			

E/F 45° Elbow



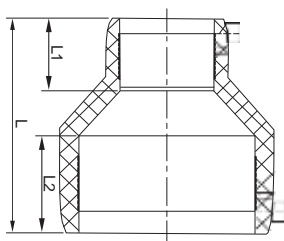
Part Number	Size(mm)	L	L1	Qty/Ctn
1330004	20			
1330005	25	65	44	240
1330006	32	74	49	160
1330007	40	86	55	100
1330008	50	100	63	60
1330009	63	114	70	40
1330010	75	131	79	24
1330011	90	145	82	16
1330013	110	159	87	9
1330014	125	190	96	6
1330015	160	206	105	4
1330017	180	225	112	2
1330019	200	265	129	2
1330021	250	320	150	1
	315	395	179	
	400			

E/F Tee



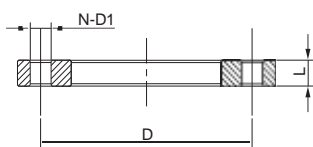
Part Number	Size (mm)	L	L1	Z1	Z	Qty/Ctn
1340002	20					180
1340003	25					
1340004	32	118	44	46	73	120
1340005	40	136	49	40	84	70
1340006	50	157	55	57	95	48
1340007	63	190	63	65	115	30
1340008	75	215	70	72	130	20
1340009	90	242	79	81	150	12
1340010	110	266	82	84	167	7
1340011	125	290	87	89	181	5
1340013	160	338	98	105	222	3
1340014	180	368	105	107	237	2
1340015	200	398	112	115	255	2
1340017	250	472	129	135.3	301	1
1340019	315	567	150	150	360	
1340021	400	690	179	178	440	

E/F Reducer



Part Number	Size (mm)	L	L1	L2	Qty/Ctn
1310127	32x25				
1310159	40x32	105	49	44	150
1310190	50x32	115	55	44	126
1310191	50x40	115	55	49	100
1310221	63x32	130	63	44	72
1310222	63x40	130	63	49	72
1310223	63x50	130	63	55	70
1310225	75x63	145	70	63	48
1310286	90x63	175	79	63	28
1310287	90x75	175	79	70	28
1310316	110x50	160	82	55	33
1310317	110x63	180	82	63	20
1310318	110x75	180	82	70	24
1310319	110x90	180	82	79	24
1310350	125x90	195	85	79	14
1310412	160x90	224	79	142	6
1310413	160x110	224	73	105	6
1310472	200x63	250	63	112	5
1310475	200x110	250	82	112	4
1310478	200x160	250	98	148	4
1310537	250x110	280	66	143	3
1310540	250x160	280	85	140	2
1310542	250x200	280	103.5	138	2
1310602	315x160	320	77	166	
1310604	315x200	320	94	165	1
1310606	315x250	320	114	163	1
1310666	400x200	370	87	200	
1310670	400x315	370	130	200	

E/F Backing Ring (Steel Tray)



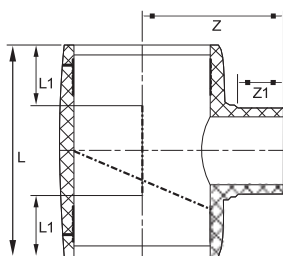
Part Number	Size(mm)	L	L1	Qty/Ctn
1360010	110	220	22	3
1360013	160	285	24	1
1360015	200	340	26	1
1360017	250	405	29	1
1360019	315	460	32	1
1360021	400	508	36	1

E/F Straight Saddle



Part Number	Size(mm)	Qty/Ctn
1370286	90x63	
1370317	110x63	30
1370348	125x63	
1370410	160x63	30
1370472	200x63	
1370474	200x90	12
1370536	250x90	12
1370599	315x110	4
1370602	315x160	3

E/F Reducing Tee



Part Number	Size (mm)	L	L1	Z1	Z	Qty/Ctn
1340126	32x20	107	44	43	70	130
1340127	32x25	111.5	44	43	70	130
1340157	40x20	118.5	49	43	76	90
1340158	40x25	123	49	43	76	90
1340159	40x32	129	49	46	79	90
1340188	50x20	130.5	55	42	79.5	70
1340189	50x25	135.8	55	43	81	65
1340190	50x32	142.2	55	46	84	60
1340191	50x40	149	55	51	89	60
1340219	63x20	153	63	43	90	40
1340220	63x25	158	63	43	90	40
1340221	63x32	165.5	63	46	96	40
1340222	63x40	172.5	63	51	101	40
1340223	63x50	180.5	63	57	107	36
1340253	75x40	186.3	70	51	109	
1340254	75x50	194.2	70	57	115	
1340255	75x63	204	70	65	123	
1340284	90x40	197	79	51	120	16
1340285	90x50	209.5	79	57	126	16
1340286	90x63	219	79	65	134	15
1340287	90x75	230	79	72	141	14
1340316	110x50	218	82	57	140	10
1340317	110x63	226	82	65	148	10
1340318	110x75	238	82	72	155	9
1340319	110x90	250	82	81	164	9
1340348	125x63	239	87	65	160	6
1340349	125x75	249.6	87	72	167	6
1340350	125x90	261.6	87	81	175	6
1340351	125x110	278.6	87	84	178	6
1340409	160x50	249	98	57	174	4
1340410	160x63	259	98	65	182	4
1340411	160x75	270	98	72	189	3
1340412	160x90	282	98	81	198	3
1340413	160x110	298	98	84	201	3
1340447	180x160	352	105	100	230	
1340471	200x50	308	112	70	216	2
1340472	200x63	308	112	70	216	2
1340473	200x75	308	112	81	227	
1340474	200x90	308	112	81	227	
1340475	200x110	365	112	100	245	2
1340478	200x160	365	112	100	245	2
1340533	250x50	330	129	80	252	
1340534	250x63	330	129	80	252	
1340535	250x75	330	129	80	254	
1340536	250x90	358	129	90	265	
1340537	250x110	358	129	90	265	1
1340540	250x160	430	129	110	291	1
1340542	250x200	430	129	120	291	1
1340599	315x110	440	150	100	325	
1340602	315x160	440	150	105	325	
1340604	315x200	514	150	120	346	
1340606	315x250	514	150	134	346	
1340670	400x315	619	179	163	425	

E/F Tapping Saddle



Part Number	Size(mm)	Qty/Ctn
1380221	63x32	
1380286	90x63	
1380315	110x40	
1380317	110x63	
1380410	160x63	
1380474	200x90	
1380536	250x90	

E/F Stop Saddle



Part Number	Size(mm)	Qty/Ctn
1390009	90	
1390010	110	
1390011	125	
1390013	160	
1390015	200	
1390017	250	
1390019	315	8

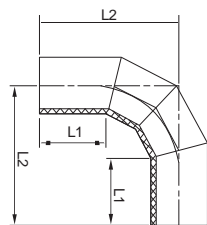
Feature :

- **Material** : PE 100
- **Size** : full 110mm through 800mm availability
- **Pressure Rating** : 0.6MPa, 1.0MPa, 1.6MPa, or other nominal pressure available upon request
- **Standard** : ISO 4427-3, EN 12201-3, BS EN 12001-3 AS/NZS 4129 BS 6920
- **Color** : Black, Blue, Other colors are also available upon request
- **Joint** : joining pipe and fabricated fittings by butt fusion joint

Advantages :

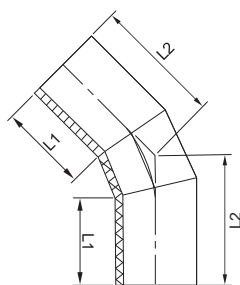
- **Non-toxic** : no heavy metal additives, would not be covered with dirt or contaminated by bacterium
- **Corrosion Resistance** : resist chemical matters and electron chemical corrosion
- **Low Installation Costs** : light weight and ease of installation can reduce installation costs
- **High Flow Capacity** : smooth interior walls result in low pressure loss and high volume
- **Longevity** : more than 50 year under proper use

Fabricated 90° Elbow



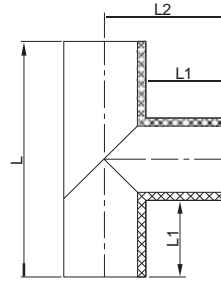
Part Number	Size (mm)	L1	L2	Qty/Ctn
0.6, 1.0 MPa				
1404019	1406019	315	374	773
1404020	1406020	355	374	833
1404021	1406021	400	374	900
1404022	1406022	450	410	975
1404023	1406023	500	405	1100
1404024	1406024	560		
1404025	1406025	630	526	1295
1404026	1406026	710		
1404027	1406027	800		

Fabricated 45° Elbow



Part Number	Size (mm)	L1	L2	Qty/Ctn
0.6, 1.0 MPa				
1414018	1416018	280	340	498
1414019	1416019	315	340	520
1414020	1416020	355	363	548
1414021	1416021	400	363	580
1414022	1416022	450	400	950
1414023	1416023	500		
1414024	1416024	560	500	1180
1414025	1416025	630		
1414026	1416026	710		
1414027	1416027	800		

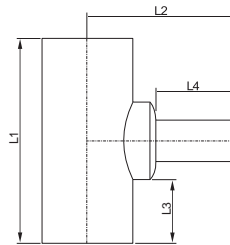
Fabricated Tee



Part Number	Size (mm)	L1	L2	L	Qty/Ctn
1420019	315	300	300	920	
1420020	355	300	300	960	
1420021	400	300	300	1000	
1420022	450	305	305	1060	
1420023	500	350	350	1200	
1420024	560				
1420025	630	350	350	1330	

Nominal Pressure is available in 0.6MPa, 1.0MPa and 1.6MPa

Fabricated Reducing Tee

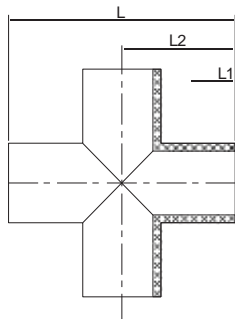


Part Number	Size (mm)	L1	L2	L3	L4	Qty/Ctn
1420472	200x63	600	275	235	145	
1420473	200x75	600	285	223	155	
1420474	200x90	600	290	213	155	
1420503	225x63	600	288	235	145	
1420504	225x75	600	298	223	155	
1420505	225x90	600	303	213	155	
1420506	225x110	600	308	203	160	
1420534	250x63	630	300	250	145	
1420535	250x75	630	310	238	155	
1420536	250x90	630	315	228	155	
1420537	250x110	630	320	218	160	
1420538	250x125	630	325	203	160	
1420565	280x63	670	315	270	145	
1420566	280x75	670	335	258	155	
1420567	280x90	670	340	248	155	
1420568	280x110	670	345	238	160	
1420569	280x125	670	335	223	160	
1420596	315x63	670	343	270	145	
1420597	315x75	670	353	258	155	
1420598	315x90	670	358	248	155	
1420599	315x110	670	363	238	160	

Part Number	Size (mm)	L1	L2	L3	L4	Qty/Ctn
1420600	315x125	670	368	223	160	
1420602	315x160	670	363	203	160	
1420627	355x63	670	358	270	145	
1420628	355x75	670	373	258	155	
1420629	355x90	670	378	248	155	
1420630	355x110	670	393	238	160	
1420631	355x125	670	393	223	160	
1420633	355x160	670	382	203	160	
1420658	400x63	720	380	295	145	
1420659	400x75	720	395	283	155	
1420660	400x90	720	400	273	155	
1420661	400x110	720	415	263	160	
1420662	400x125	720	425	248	160	
1420664	400x160	720	405	228	160	
1420689	450x63	720	400	295	145	
1420690	450x75	720	410	283	155	
1420691	450x90	720	425	273	155	
1420692	450x110	720	430	263	160	
1420693	450x125	720	440	248	160	
1420695	450x160	720	430	228	160	
1420720	500x63	760	430	315	145	
1420721	500x75	760	440	303	155	
1420722	500x90	760	455	293	155	
1420723	500x110	760	460	283	160	
1420724	500x125	760	470	268	160	
1420726	500x160	760	460	248	160	
1420754	560x110	760	485	283	160	
1420757	560x160	760	490	248	160	
1420782	630x63	760	500	315	145	
1420783	630x75	760	510	303	155	
1420784	630x90	760	530	393	155	
1420785	630x110	760	535	283	160	
1420786	630x125	760	540	268	160	
1420788	630x160	760	530	248	160	

Nominal Pressure is available in 0.6MPa, 1.0MPa and 1.6MPa

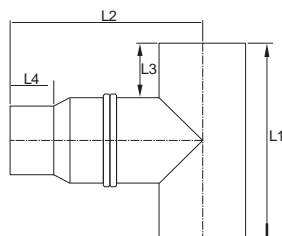
Fabricated Cross



Part Number	Size (mm)	L1	L2	L	Qty/Ctn
1430010	110	150	205	410	
1430011	125	150	215	430	
1430013	160	150	230	460	
1430015	200				
1430016	225	150	250	500	
1430017	250	150	265	530	
1430018	280	250	350	750	
1430019	315				
1430020	355	300	460	920	
1430021	400	300	480	960	
1430022	450	300	500	1000	
1430023	500				
1430024	560				
1430025	630				

Nominal Pressure is available in 0.6MPa, 1.0MPa and 1.6MPa

Fabricated Reducing Tee Assembly



Part Number	Size (mm)	L1	L2	L3	L4	Qty/Ctn
1440471	200x50	600	315	235	30	2
1440475	200x110	440	500	120	78	2
1440476	200x125	440	650	120	70	3
1440478	200x160	440	450	120	100	2
1440507	225x125	530	705	152.5	80	3
1440509	225x160	530	485	152.5	90	2
1440511	225x200	530	400	152.5	90	2
1440533	250x50	630	340	250	30	2
1440540	250x160	600	570	165	90	2
1440542	250x200	600	500	165	100	2
1440543	250x225	600	450	165	90	2
1440571	280x160	632	588	176	100	2
1440573	280x200	632	550	176	90	2
1440595	315x50	670	383	270	30	3
1440603	315x180	920	800	302.5	80	3
1440604	315x200	920	638	302.5	100	2
1440605	315x225	920	575	302.5	90	2
1440606	315x250	920	590	302.5	88	2
1440607	315x280	920	550	302.5	85	2
1440626	355x50	670	398	270	30	2
1440634	355x180	960	1050	302.5	80	4
1440635	355x200	960	850	302.5	100	3
1440636	355x225	960	800	302.5	90	3
1440637	355x250	960	820	302.5	88	3
1440638	355x280	960	785	302.5	85	3
1440639	355x315	960	590	302.5	90	2

Part Number	Size (mm)	L1	L2	L3	L4	Qty/Ctn
1440657	400x50	720	420	295	30	3
1440666	400x200	1000	850	300	100	3
1440667	400x225	1000	820	300	90	3
1440668	400x250	1000	841	300	88	3
1440669	400x280	1000	800	300	85	3
1440670	400x315	1000	610	300	77	2
1440671	400x355	1000	600	300	30	2
1440696	450x180	1060	1300	305	80	4
1440697	450x200	1060	1173	305	100	3
1440698	450x225	1060	1100	305	90	3
1440699	450x250	1060	1126	305	88	3
1440700	450x280	1060	1085	305	77	3
1440701	450x315	1060	895	305	30	2
1440702	450x355	1060	895	305	90	2
1440703	450x400	1060	895	305	130	2
1440727	500x180	1200	1390	305	80	5
1440728	500x200	1200	1196	305	100	4
1440729	500x225	1200	1194	305	90	4
1440730	500x250	1200	1150	305	88	4
1440731	500x280	1200	1110	305	85	4
1440732	500x315	1200	920	305	85	3
1440733	500x355	1200		305		3
1440734	500x400	1200	710	305	110	2
1440735	500x450	1200		305		2
1440760	560x225	1260	1421	305	90	4
1440762	560x280	1260	1400	305	80	4
1440763	560x315	1260	1200	305	85	3
1440789	630x180	1330	1800	305	80	6
1440790	630x200	1330	1610	305	100	5
1440791	630x225	1330	1546	305	90	5
1440792	630x250	1330	1564	305	88	5
1440793	630x280	1330	1300	305	85	5
1440794	630x315	1330	1285	305	85	4
1440795	630x355	1330		305		4
1440796	630x400	1330	1080	305	120	3
1440797	630x450	1330	1335	305	80	3
1440798	630x500	1330	1055	305	60	2

Nominal Pressure is available in 0.6MPa, 1.0MPa and 1.6MPa

